

Creatix CTX 917 V.1 DVB-T/TV-Tuner Card



Installation manual

Safety instructions for the Creatix CTX917 V.1 DVB-T/TV-Tuner Card

This equipment has been designed and tested in accordance with the requirements of EN55013 und EN55020.

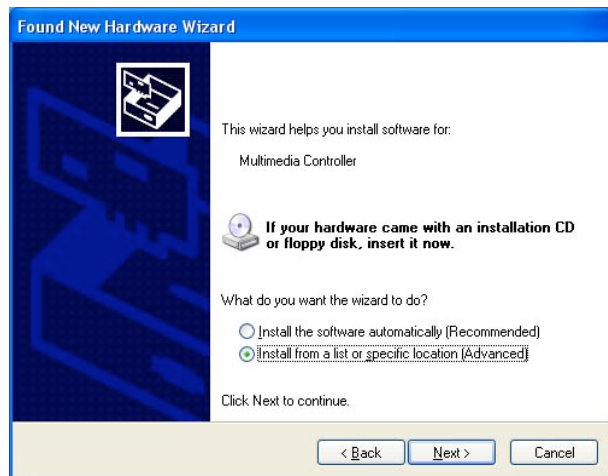
Antenna cables must be connected to earth ground.

Installation under Windows XP

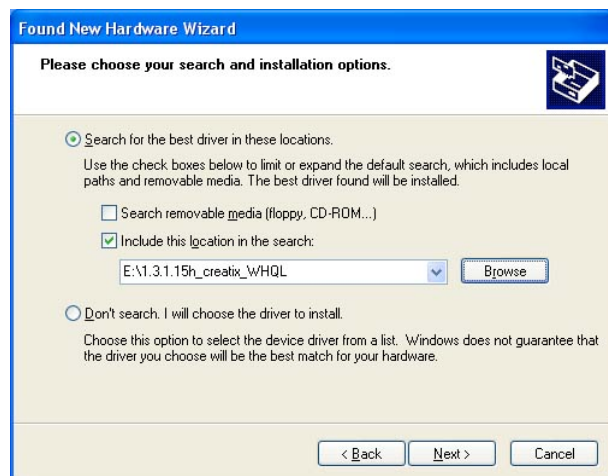
System requirements:

Under Windows XP Service Pack 2 must be installed.

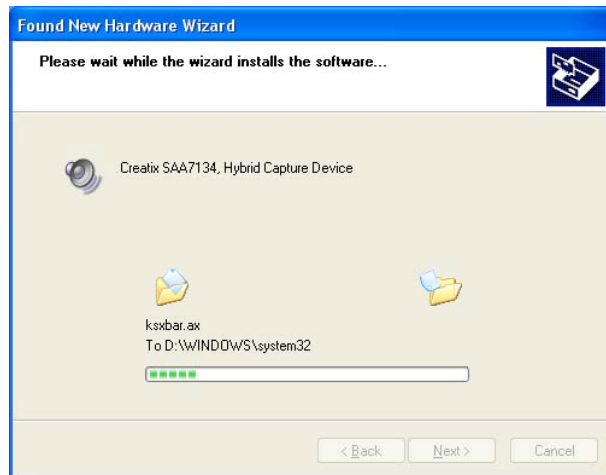
- Power off your PC, unplug the power cord and open the cover. Plug in the Creatix “**CTX917 V.1 DVB-T/TV-Tuner**” Card in an available PCI slot, close the cover and plug back the power cord. Start your PC again.
- The Hardware Wizard will detect the Creatix “**CTX917 V.1 DVB-T/TV-Tuner**” Card as a Multimedia Controller. Select “**Install from a list or specific location (Advanced)**”. Continue with “**Next>**”.



- To install the card chose the option “**Search for the best driver in these location**” mark the box “**Include this location in the search**” and continue with “**Next>**”.



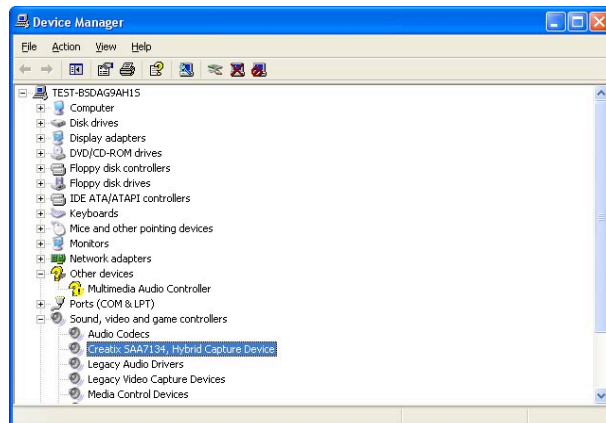
- The Wizard will find the “**Creatix SAA7134, Hybrid Capture Device**” and start copying corresponding files into the system. After copying the files continue the installation by pushing the button “**Next>**” in the subsequent window.



- Continue with “**Finish**” to complete the installation.



- Click with the right mouse button to “**My computer**”. Go to “**Properties**”, and open the index card “**Hardware**” and click the “**Device Manager**” button to see if any exclamation mark (!) appears next to **Creatix SAA7134, Hybrid Capture Device**. If not, your Creatix “**CTX 917 V.1 DVB-T/TV-Tuner**” Card is working correct.

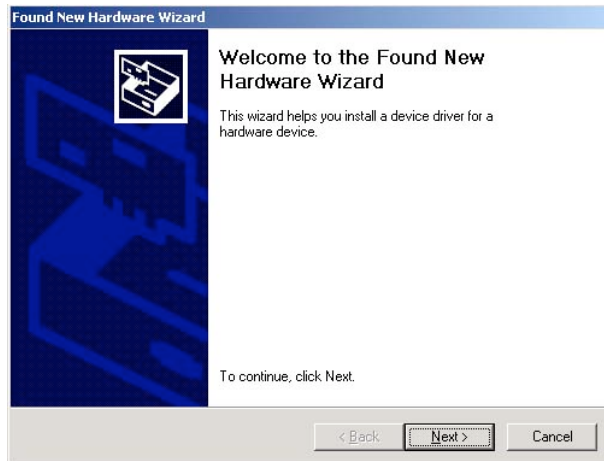


Installation under Windows 2000

System requirements:

Under Windows 2000 Service Pack 4 and Direct X 9.0 must be installed.

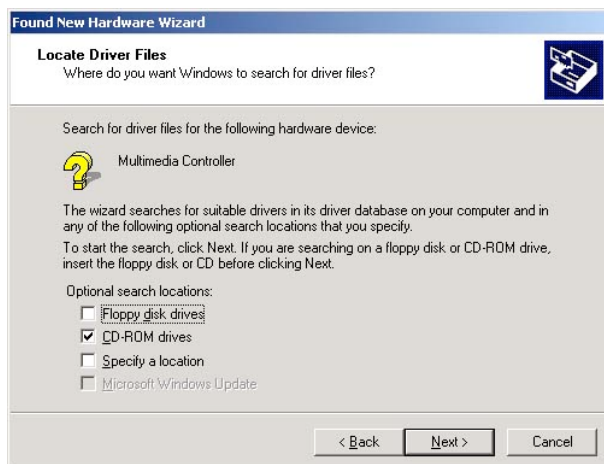
- Power off your PC, unplug the power cord and open the cover. Plug in the Creatix “**CTX917 V.1 DVB-T/TV-Tuner**” Card in an available PCI slot, close the cover and plug back the power cord. Start your PC again.
- The Hardware Wizard will detect the Creatix “**CTX917 V.1 DVB-T/TV-Tuner**” Card as a Multimedia Controller. Start the installation by pressing the button “**Next>**”.



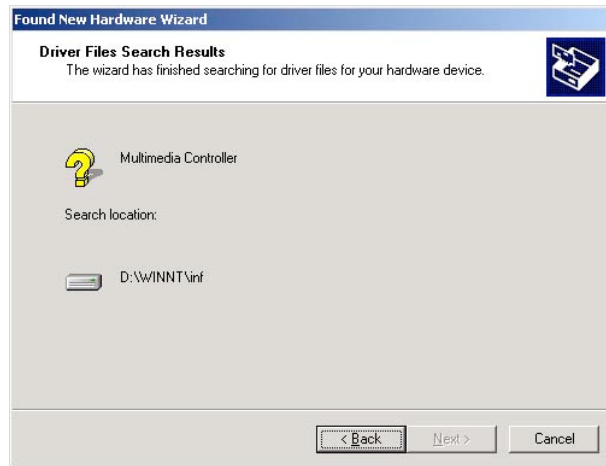
- In this window select “**Search for a suitable driver for my device (recommended)**”. Click on “**Next>**” to continue.



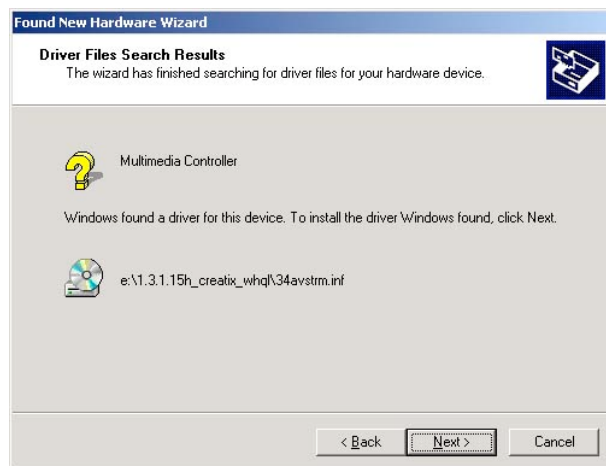
- Specify the location where the wizard should search for a suitable driver and mark the box “**CD-ROM drives**”. Continue the installation by pushing the button “**Next>**”.



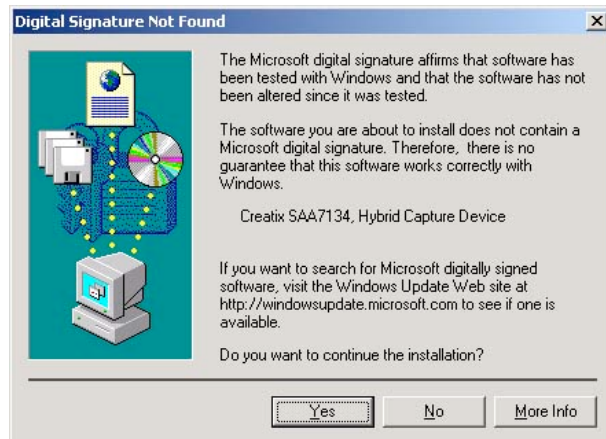
- The wizard is searching for the driver it will take some time. Please wait until the next message appears.



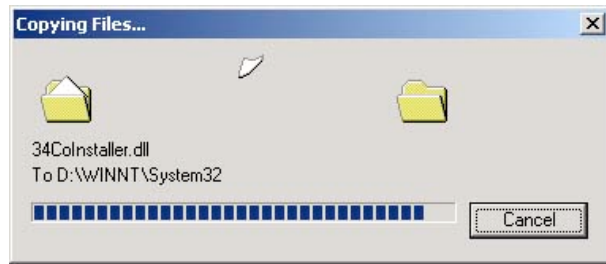
- After the wizard finished the searching, please continue with “Next>”.



- The message appears that the Software of the “Creatix SAA7134, Hybrid Capture Device” has not passed Windows Logo testing to verify its compatibility with Windows 2000. Click on the “Yes” button to continue the installation.



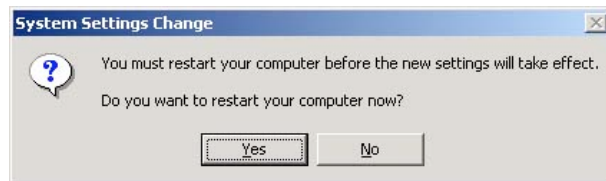
- Files will be copied. Please wait.



- To complete the installation, press the “Finish” button.



- You need to reboot your PC after the installation.



- Click with the right mouse button to “My computer”. Go to “Properties”, and open the index card “Hardware”. Click the “Device Manager” button to see if any exclamation mark (!) appears next to “Creatix SAA7134, Hybrid Capture Device“. If not, your Creatix “CTX917 V.1 DVB-T/TV-Tuner” Card is working correctly.

