

CTX948 V.1 4in1 TV-Tuner Card

Product Specification

Description:

CTX948 V.1 supports analog TV, DVB-T, DVB-S and S-Video/
Composite Video-In/Audio-In.

- low profile PCI card
- PCI 2.2 compliant

Main Chips:

Philips SAA7131E, TDA8275A, TDA8263, TDA10046, TDA10086

Philips SAA7131E**Features:**

The SAA7131E combines a digital global standard low IF demodulator for analog TV with a PCI audio and video decoder. The IF demodulator is an alignment-free digital multi standard vision and sound low IF signal PLL demodulator for positive and negative video modulation. It can be used worldwide for M/N, B/G/H, I, D/K and L/L' standards.

Analog/DVB-T section (Philips TDA8275A)**Features:**

- 3 Stand-by mode functions
- 1 Sleep mode function
- Low symmetrical IF output (centered at 4MHz, 4.5MHz or 5MHz) for a direct connection to the TDA8290 (IF demodulator) or the SAA7131 or SAA7171 (IF demodulator and video decoder) or channel decoder
- Fully integrated oscillators with no external components
- Fully integrated selectivity
- Crystal oscillator output buffer (16MHz) to drive the IF demodulator and digital decoder and occasionally another tuner
- Operating range from an ambient temperature of -20°C to a max ambient temperature compatible with Tjmax

DVB-S section (Philips TDA8262/3)**Features:**

- Direct conversion demodulation for QPSK and 8PSK (Zero IF)
- 950 to 2,175 MHz frequency range
- +3.3 V DC supply voltage (no 5 V or 30 V supply required)
- Low power (<600mW)
- Low phase noise fully integrated oscillator
- Cost optimized application
- High range input level – -70 to 0 dBm @ 75 Ω input impedance
- Low noise RF input (integrated LNA)
- High AGC range with high AGC linearity
- Optimized interface with Philips' digital satellite demodulators TDA10086

CREATIX
Creative Information eXchange

Creatix Polymedia GmbH
Heinrich-Barth-Strasse 3
D-66115 Saarbrücken

Telefon: +49 681 9811 300
Fax: +49 681 9811 390

CTX948 V.1 4in1 TV-Tuner Card

Product Specification

TV System:

Supports DVB-T and worldwide TV broadcasting PAL, B/G/D/K/I & SECAM L/L'

CHANNEL COVERAGE

BAND	FREQUENCY (MHz)
Low band	48.25 to 158.000 MHz*
Mid band	160.00 to 442.00 MHz
High band	442.00 to 863.25 MHz

*Can cover down to 45.75 MHz (CH A for Ireland)

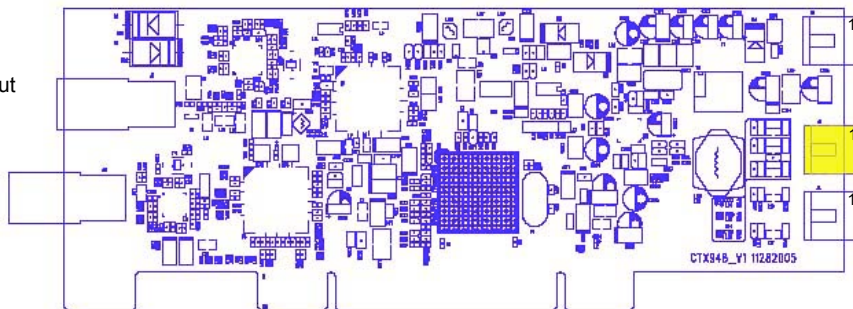
Supports DVB-S:

- Channel Coverage 950MHz to 2175MHz frequency range
- Digital Video Broadcasting (DVB) QPSK demodulation
- DiSEqC 1.x support

IO-CONNECTOR SPECIFICATION:

TV/DVB-T Antenna Input
PAL-type connector

DVB-S Antenna Input
F-type connector



J6 - LNB Power In

J3 - Video In

J4 - Audio In

AUDIO-IN (White)

- 1 - Left channel-In
- 2 - GND
- 3 - GND
- 4 - Right channel-In

VIDEO-IN (Yellow)

- 1 - C-In (S-Video)
- 2 - GND
- 3 - CVBS-In (Composite Video)
- 4 - Y-In (S-Video)

LNB Power In

- 1 - Not connected
- 2 - GND
- 3 - GND
- 4 - +12V/900mA In

CREATIX
Creative Information eXchange

Creatix Polymedia GmbH
Heinrich-Barth-Strasse 3
D-66115 Saarbrücken

Telefon: +49 681 9811 300
Fax: +49 681 9811 390

CTX948 V.1 4in1 TV-Tuner Card

Product Specification

RATINGS:

DC Input: +3.3V === 850mA
 + 5V === 600mA
 + 12V LNB === 900mA

PCB Dimensions:

63,5mm x 164mm

SYSTEM REQUIREMENT:

- Pentium IV 2.0 MHz or Higher
- 128MB of system memory or higher
- 7200rpm hard disk or above
- CD-ROM or DVD-ROM drive
- PCI/AGP/PCIe VGA graphic card
- Full-duplex sound card
- Microsoft Windows 2000/XP
- Microsoft DirectX 9 or higher